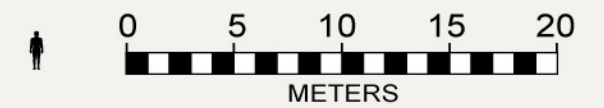


If printed 17 inches tall (from black-outlined edge to black-outlined edge) the scale of these drawings is 1/350.



NOTES

DECK 10

A Main Sensor Dish was not installed on Nelson-class Scouts because the Deflector System and Sensors in the bow of the Primary Hull were found to be adequate.

TMoST mentions Photon Torpedoes but not their location. Photon Torpedoes were shown in various episodes of STAR TREK to emanate from the underside of the Primary Hull, approximately the same place as the Phasers. Since TMoST states Phaser Banks are on Deck 11, the logical spot for Photon Torpedoes and their launch system is on Deck 10.

Scouts do not carry Photon Torpedoes, but they do carry Probes. Both employ the same launch system and tracking / control system. Therefore, Probe Launch Control and Probe Storage are located on Deck 10.

TMoST states that miscellaneous activities and cargo spaces are on Deck 10.

DECK 10 VENTRAL

Engineering Monitoring Stations are located here.

DECK 11

This equipment is for the Tractor Beam. The 3 Tractor Beam Controllers direct the Emitter so that the beam can locate and lock onto the object being towed.

The 3 pale gold-coloured recessed rings on the underside of the Primary Hull absorb and re-direct any back-scatter created by the Tractor Beam.

DECK 11 VENTRAL

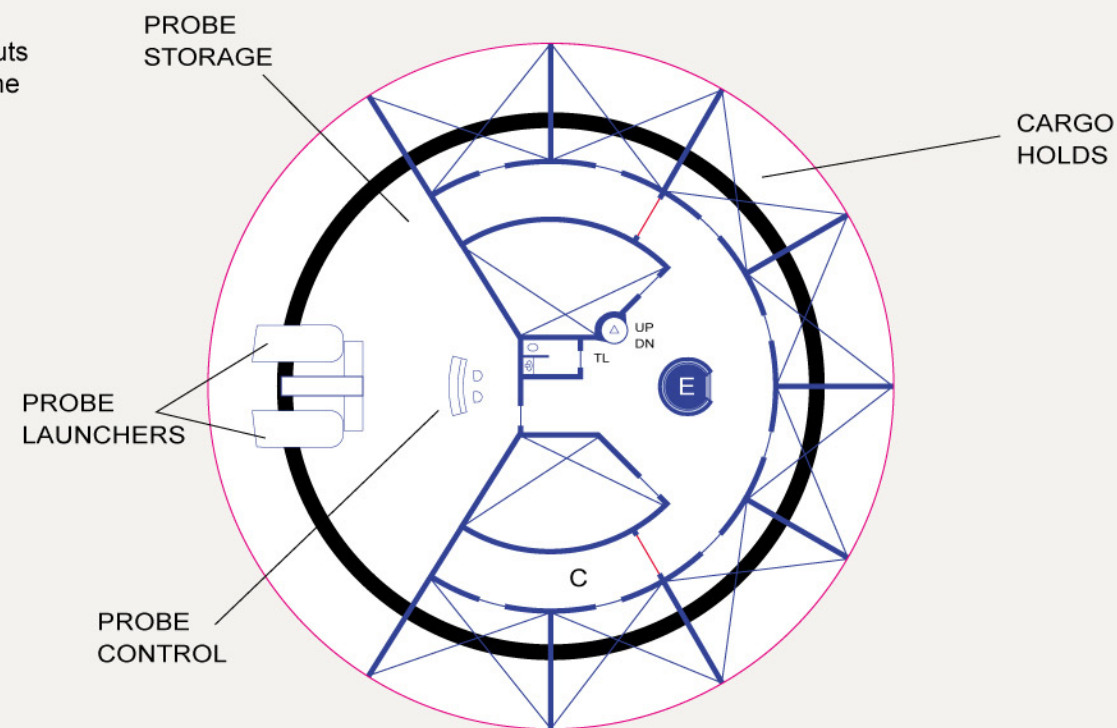
More Engineering Monitoring Stations are located here.

DECK 12

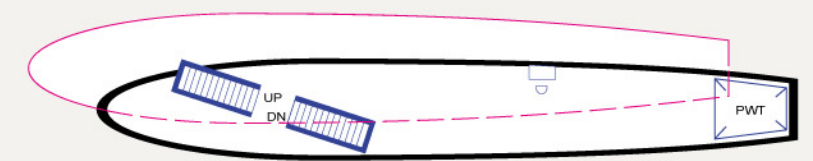
The Lower Sensor Dome is located here. The Tractor Beam Emitter is at the bottom of the Lower Sensor Dome.

DECK 12 VENTRAL

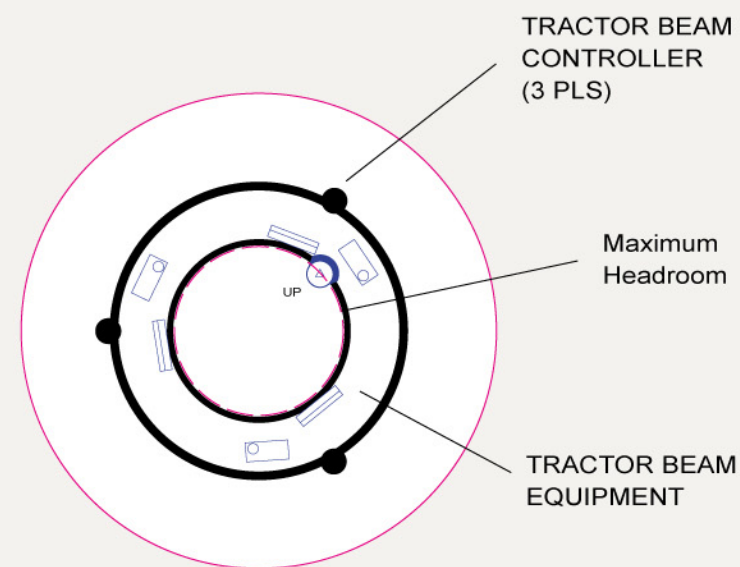
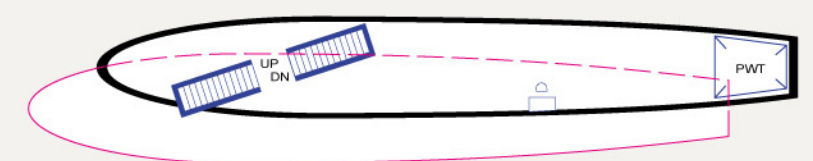
The disconnection equipment is located on these decks. This area is kept clear and is difficult to enter except by authorized personnel. It is accessible only by stairs.



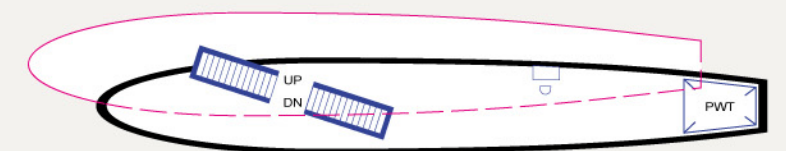
DECK 10: PROBE LAUNCHERS / CARGO



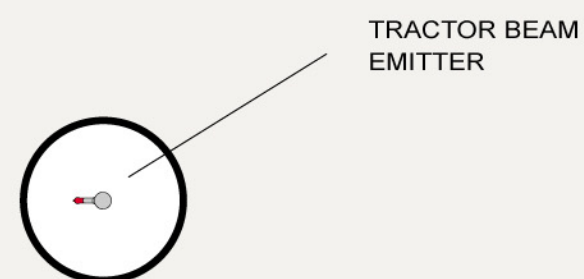
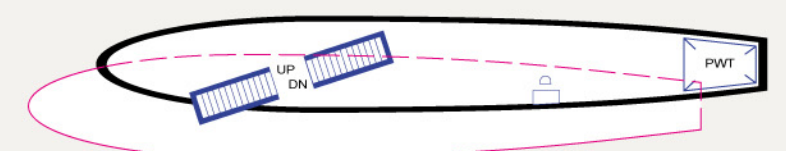
DECK 10: VENTRAL



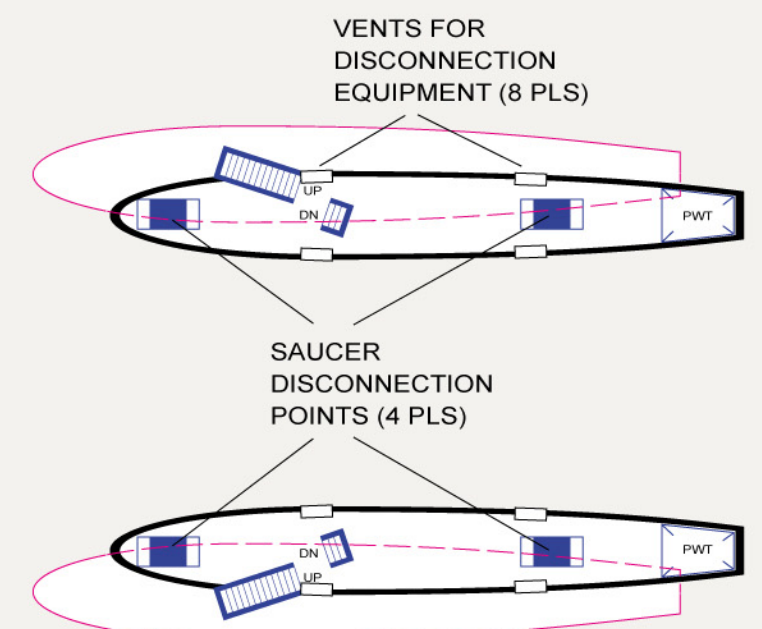
DECK 11: TRACTOR BEAM



DECK 11: VENTRAL



DECK 12: SENSORS / TRACTOR BEAM



DECK 12: VENTRAL